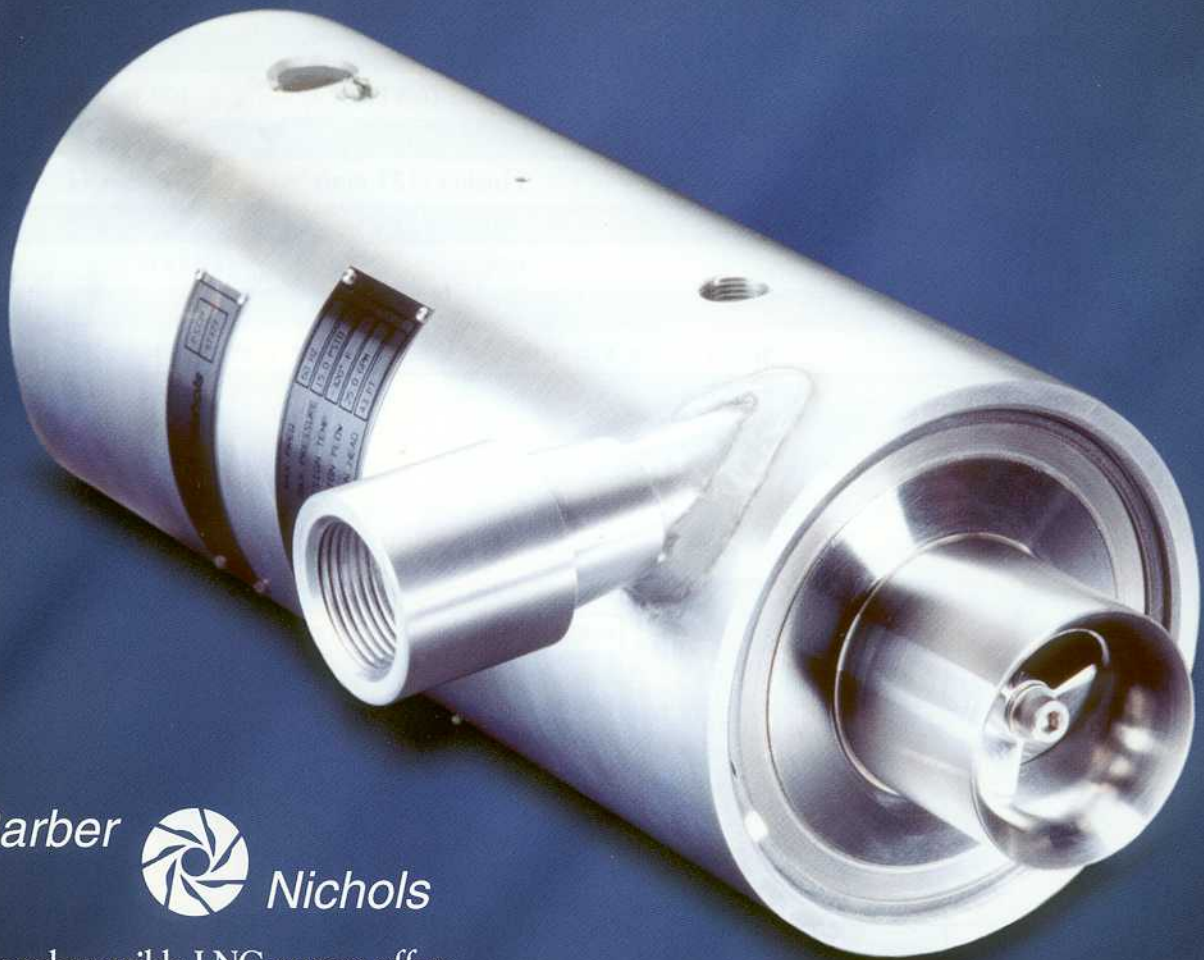


Submersible Liquefied Natural Gas (LNG) Pumps



Barber  Nichols

Our submersible LNG pumps offer:

- high reliability
- high efficiency
- competitive pricing
- small size
- light weight
- low maintenance
- low NPSH requirements
- designs to provide variable head and flow

Barber-Nichols has designed and manufactured high quality cryogenic pumps for over twenty years. We can design special features or provide modifications to meet your unique requirements.

(BNCP-33 is product shown)

Submersible LNG Pumps

Technical Data

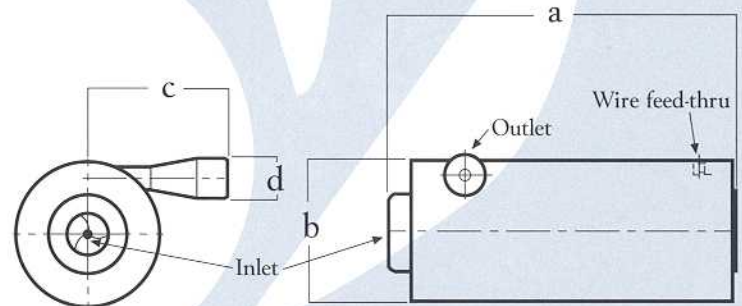
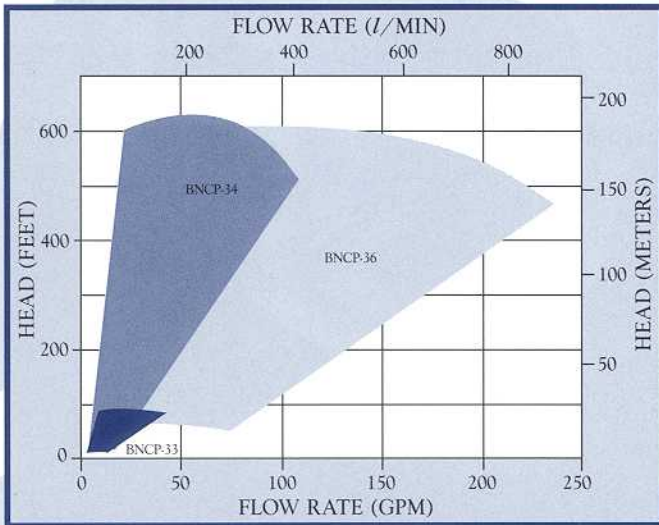
Specifications	BNCP-33	BNCP-34	BNCP-36
Design head	43 ft (13 m)	532 ft (162 m)	592 ft (180 m)
Design flow rate	25 gpm (95 l/min)	60 gpm (227 l/min)	150 gpm (568 l/min)
Design differential pressure	7.9 psid (.5 bars)	98 psid (6.8 bars)	109 psid (7.5 bars)
Inlet temperature	-260° F (-162° C)	-260° F (-162° C)	-260° F (-162° C)
Impeller diameter	3.6 inches (91 mm)	5 inches (127 mm)	6 inches (152 mm)
Design pump speed	2,850 rpm	7,200 rpm	6,350 rpm
Pump efficiency	57%	48%	54%
Design motor size	.57 hp (.43 kW)	10 hp (7.5 kW)	19 hp (14.2 kW)
Motor voltage	per customer requirements		

SPECIFICATIONS SUBJECT TO CHANGE WITHOUT NOTICE

Pump Dimensions (approx.)

	a	b	c	d	weight
BNCP-33	13.3 (338)	5.0 (127)	5.0 (127)	1 NPT	26 lbs (12 kg)
BNCP-34	16.1 (409)	6.9 (175)	6.5 (165)	1.5 NPT	90 lbs (41 kg)
BNCP-36	19.3 (491)	8.4 (213)	8.0 (203)	2 NPT	140 lbs (64 kg)

all dimensions inches (millimeters)



Modifications to mounting features, plumbing connections, motor power requirements, or the addition of special features can be made to fit your unique requirements. We provide our customers with the added quality assurance benefits of an ISO 9001 Quality Management System.

